

FIRMWARE UPDATE -1

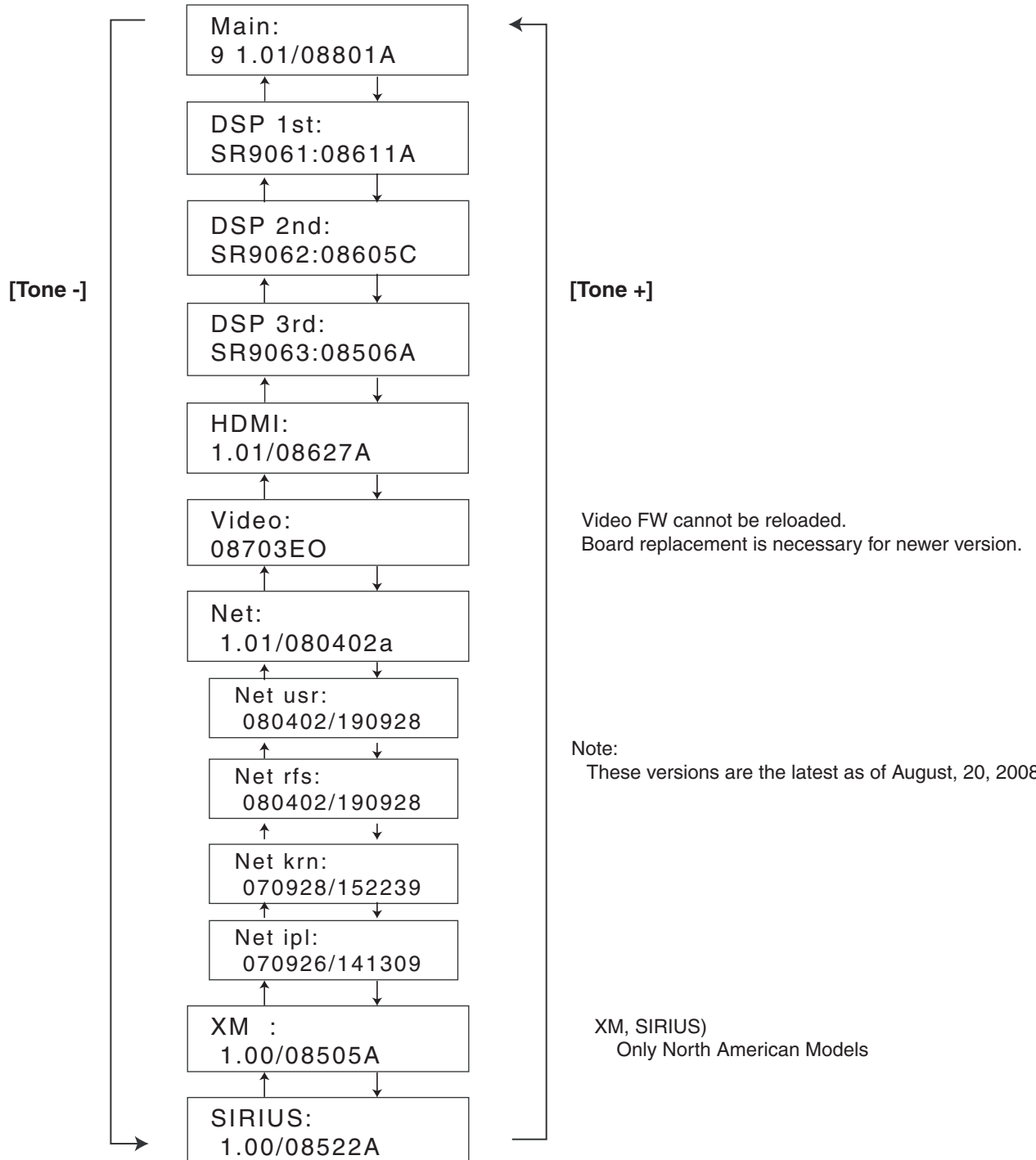
How to Check Versions of Main, DSP(1st to 3rd), HDMI, Video and Network FW

1. Press and hold down [DISPLAY] button, then press [STANDBY/ON] button when the unit is power on.
The main microprocessor version will be displayed on Front Display for about 3 seconds.

<e.g.>

Main:
9 1.01/08801A

2. Press [Tone +] button while the version is displayed. Then, "DSP 1st SR9061:08611A" will be displayed.
Press [Tone +] button again while "DSP 1st SR9061:08611A" is displayed. Then, "DSP 2nd SR9062:08605C" will be displayed. In this way, as [Tone +] button is pressed while a version is displayed, the next information will be displayed.
If [Tone -] button is pressed, the order will be reversed.



FIRMWARE UPDATE -2

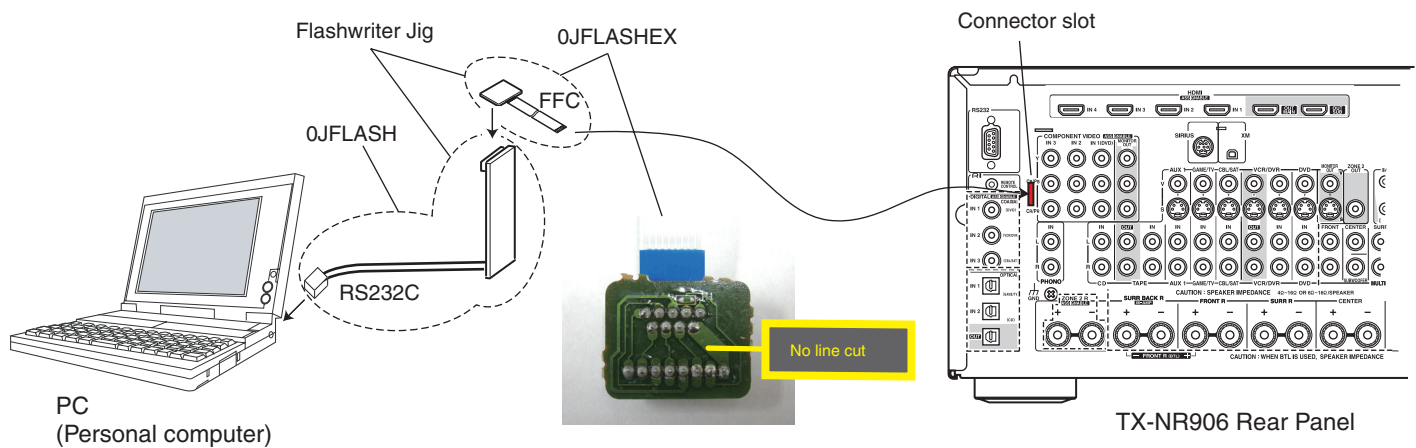
Preparation for Update (Main)

Hardware and Software

1. Personal computer(PC) with Windows XP or 2000
2. Flashwriter jig: 0JFLASH and 0JFLASHEX for Main
3. Writing soft: "flasta_exe.zip" and Manual: "Flash Writer M16 Manual.pdf"
Download and unzip "flasta_exe.zip" to extract "FlashSta.exe" etc. in advance.
4. Program & ID: Download the latest ".mot" and ".id" files for TX-NR906/TX-NA906/DTR-9.9 and store in the same folder as "FlashSta.exe."

Connection and Setup

1. While the target unit is off, connect 0JFLASH and 0JFLASHEX to RS232 port of the PC.
2. Connect the FFC of the jig to the connector slot on the rear panel of TX-NR906/TX-NA906/DTR-9.9.
3. Power on the unit.



Main Microprocessor Update Procedure

1. Start "FlashSta.exe" and update the unit referring to "Flash Writer M16 Manual.pdf".
MCU Type is M16C/80 M32. It takes about 15 minutes.
2. After Program and Read Check are finished, click "Exit" button to end "FlashSta.exe".
3. Turn off the main power switch or pull the power cord off the wall socket.
Pay attention that pushing STANDBY/ON button to power off is not perfect.
4. Remove the jig from the unit and power on the unit again. Confirm the new version number.

FIRMWARE UPDATE -3

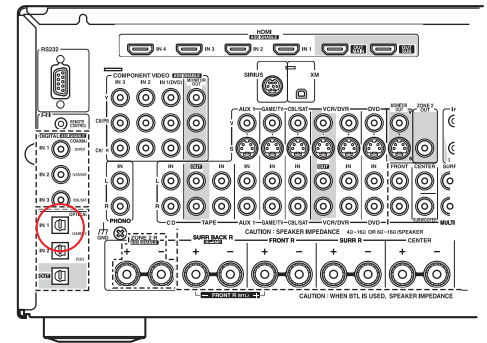
Preparation for Update (DSP, all in one)

Hardware and Software

1. Blank CD-R, PC, CD-R writing software
2. Writing soft: "CD_SR906123_08611A_08605C_08506A.wav"
(File name depends on the version.)
Store it in a blank CD-R as a music CD in advance.
3. CD player with Optical output terminal
Note: Some CD players and a lot of DVD players process audio signal before output. Such players cannot be used for this update.
4. Optical cable

First Procedure

1. Connect a CD Player with the target unit via Optical Input 1.
2. Power on the unit and wait for more than 10 seconds.



TX-NR906 Rear Panel

DSP Update Procedure

1. Press and hold down [DISPLAY] button and then press [STANDBY/ON] button to show Main FW version when the unit is powered on.

<e.g.>

Main:
9 1.01/08801A

2. Press [Tone +] button while the Main version is displayed. Then, 1st DSP FW version will be displayed.

<e.g.>

DSP 1st:
SR9061:08611A

3. Press [Return] button while the target DSP version is displayed. Then, the following message will appear.

S/PDIF Update..

4. Play the DSP FW CD-R with the CD player. After playback starts, the messages will change as below.

Estimated Time in CD Player

0:12

0:32

0:42

0:53

1:08

Writing...
1st DSP

S/PDIF Update..

Writing...
2nd DSP

S/PDIF Update..

Writing...
3rd DSP

If playback is finished without the above message, please try again.

Note: Some DVD players are not suitable for this update. If writing results in failure, use another model of player.

DURING WRITING, DO NOT TURN OFF THE POWER and DO NOT DISCONNECT OPTICAL CABLE.

If writing is stopped in the middle, Flash IC may need replacing.

After writing of 3rd DSP ends, the message in Step 3 will appear again.

Make sure that no more "Writing..." will appear.

S/PDIF Update..

Check Points:

1. "Writing... 1st DSP" was shown.
2. CD player has been playing for more than 1mins 8 secs and finishes playback.

5. Press [Standby/On] and see Front Display change as below.

Clear

The unit is put into the Standby mode.

6. Turn on the unit and confirm the new version number.

FIRMWARE UPDATE -4

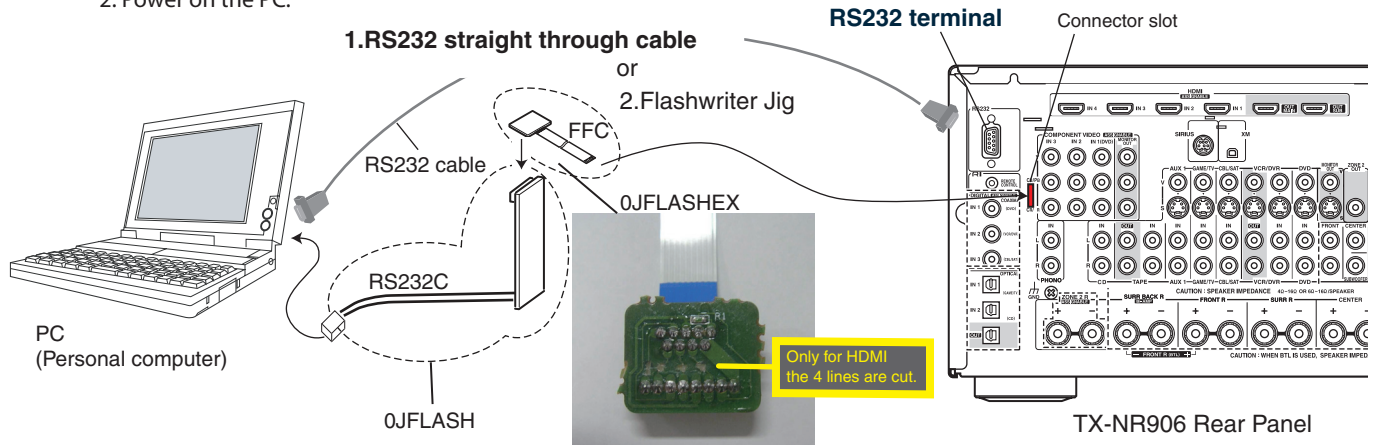
Preparation for Update (HDMI)

Hardware and Software

1. Personal computer(PC) with Windows XP or 2000
2. Cable: RS232 straight cable or Flashwriter jig: 0JFLASH and 0JFLASHX for HDMI
3. Writing soft: "906HDMI1.00.zip" for HDMI microprocessor (File name depends on the version.)
Unzip "906HDMI1.00.zip" in advance.

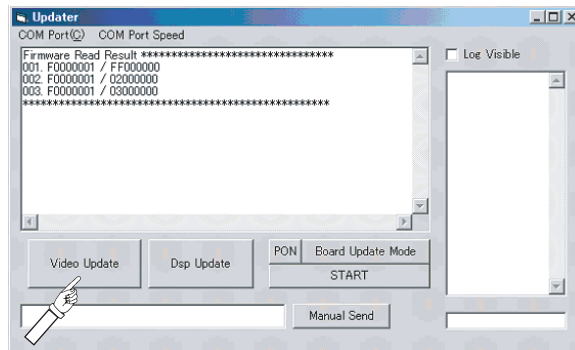
Connection and Setup

1. While the target unit is off, connect the unit and PC with RS232 straight through cable.
If RS232 cable is not available, connect 0JFLASH and 0JFLASHX to RS232 port of the PC, and then connect the FFC of the jig to the connector slot on the rear panel of TX-NR906/TX-NA906/DTR-9.9.
2. Power on the PC.

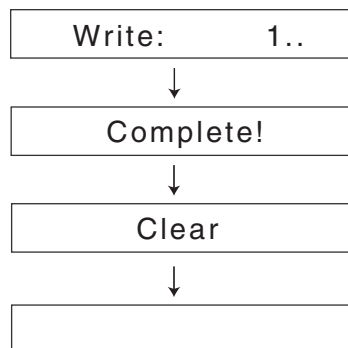


HDMI Update Procedure

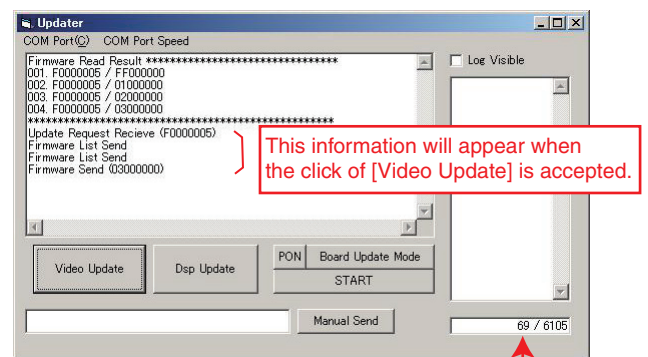
1. Double click "Update.exe" in the unzipped folder "906HDMI1.00" (Folder name depends on the version.)
The following window will appear.



2. Click "Video Update" button. The update takes about 5 minutes.
The message on Front Display will change as follows.



The unit is put into the Standby mode.



The number is going up as writing is proceeding.

3. After the update ends, turn off the unit's main power switch or pull the power cord off the wall socket.
4. Remove the jig from the unit and power on the unit again. Confirm the new version number.

FIRMWARE UPDATE -5

Preparation for Update (Video)

Preparation (Hardware and Software)

1. Place an order for NAHDM-9114-1A.

Different Video FWs are used between TX-NR/NA905, DTR-8.8, TX-NR/NA906, and DTR-9.9.

Carefully select a correct part number and do not mix up the two boards.

It is highly recommended to provide model information, too, when any of these HDMI boards are ordered.

Model:	Part Number
TX-NR/NA906:	1B170514-1A_0290A2
DTR-9.9:	1B170514-1A_0292A2
TX-NR/NA905:	1B170514-1A or 1B170514-1A_0223A2
DTR-8.8:	1B170514-1A or 1B170514-1A_0252A2

Video Update Procedure

1. Install HDMI Board NAHDM-9114-1A with the latest version of FW.

2. Turn on the unit and confirm the new version number.

Note: Video FW cannot be reloaded outside factory.

FIRMWARE UPDATE -6

Preparation for Update (Network)

Hardware and Software

1. Personal computer(PC) with USB slot (only for preparation)
2. USB memory
3. Writing soft: the target version of "firmware.dat"

Preparation

1. Delete any folders and files in a USB memory.
2. Store "firmware.dat" in the USB memory.

Network Update Procedure

1. Power on TX-NR906/TX-NA906/DTR-9.9.
2. Select [NET/USB], and see "Startup.." shown for a while on Front Panel and disappear.

SERVER
Startup...

3. Press [NET/USB] repeatedly until "USB <No storage>" is shown.

USB 0/0
<No storage>

4. Load the USB memory into USB slot on Front Panel.
Make sure that the connected USB memory is detected and the volume name of the USB memory is shown.

<e.g.> USB 1/1
o USB storage

5. Press and hold down [DISPLAY] button and then press [STANDBY/ON] button to show Main FW version when the unit is powered on.

<e.g.> Main:
9 1.01/08801A

6. Press [Tone -] button several times while the Main version is displayed. Then, Net user version will be displayed.

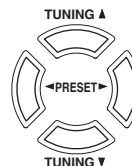
<e.g.> Net usr:
080402/190928

7. Press [DISPLAY] button while Net user version is displayed. Then, the following message will appear.

NET F/W update
RDV-00:0000000

8. Display "SH4APL" by using Cursors.

NET F/W update
SH4APL:-8702a0



Cursors on Front Panel of TX-NR906

FIRMWARE UPDATE -7

Network Update Procedure (Continued)

9. Make sure that the target version is shown and press Cursor [-->] to add "*" on the left of the target version.

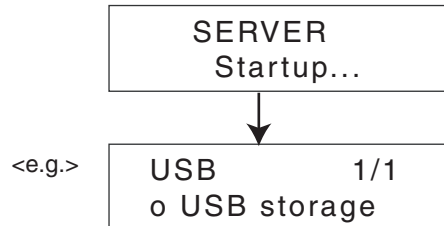
```
NET F/W update
SH4APL:*8702a0
```

10. Press [ENTER] to start update.

```
Net F/W update
Writing...
```

ATTENTION:
DURING WRITING, DO NOT TURN OFF THE POWER
BECAUSE REWRITING WILL BE IMPOSSIBLE.

11. After update completes, Network function will automatically restart.



12. Return the unit to the factory settings by holding down [VCR/DVR] and the pressing [STANDBY/ON].